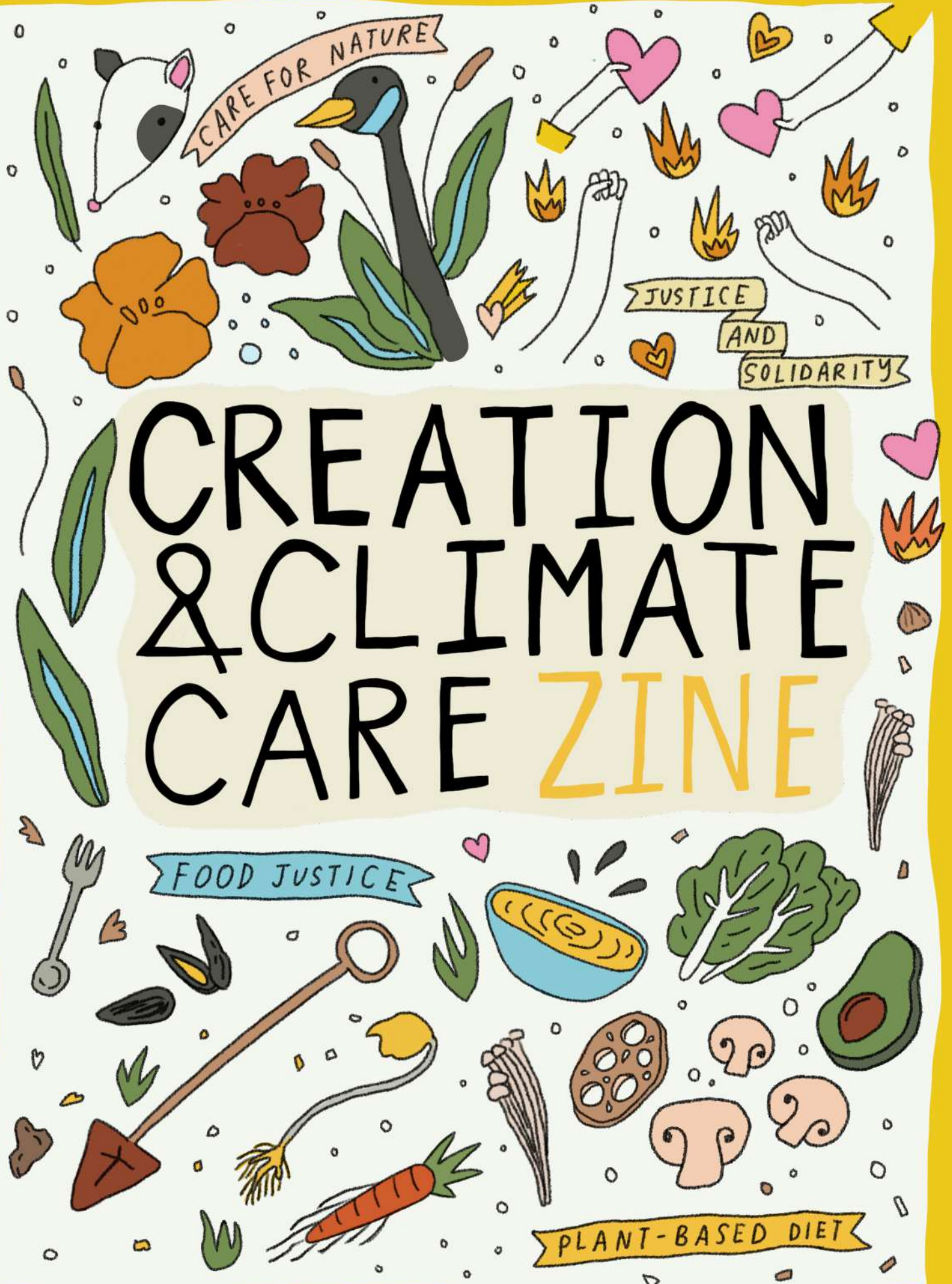


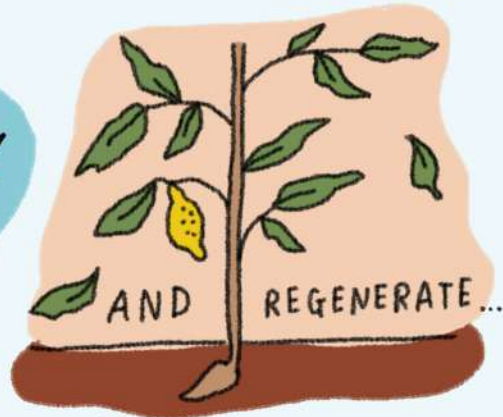
SOJOACTION x THEWEIRDANDWILD



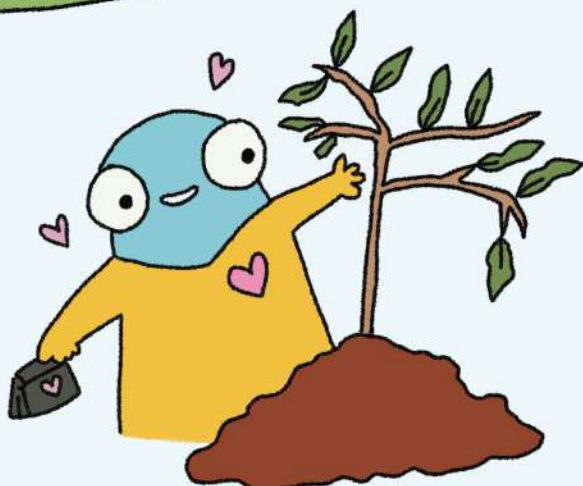


## CHAPTER 1 : CREATION CARE

THE BIBLE IS CLEAR THAT THE LAND IS GOD'S AND ALL CREATURES ARE BELOVED BY GOD. WE ARE CALLED BY GOD TO LOVE AND TAKE CARE OF CREATION AND EACH OTHER.



THE LORD GOD PUT HUMANS IN THE GARDEN OF EDEN TO WORK IT & TAKE CARE OF IT (GEN 2:15)



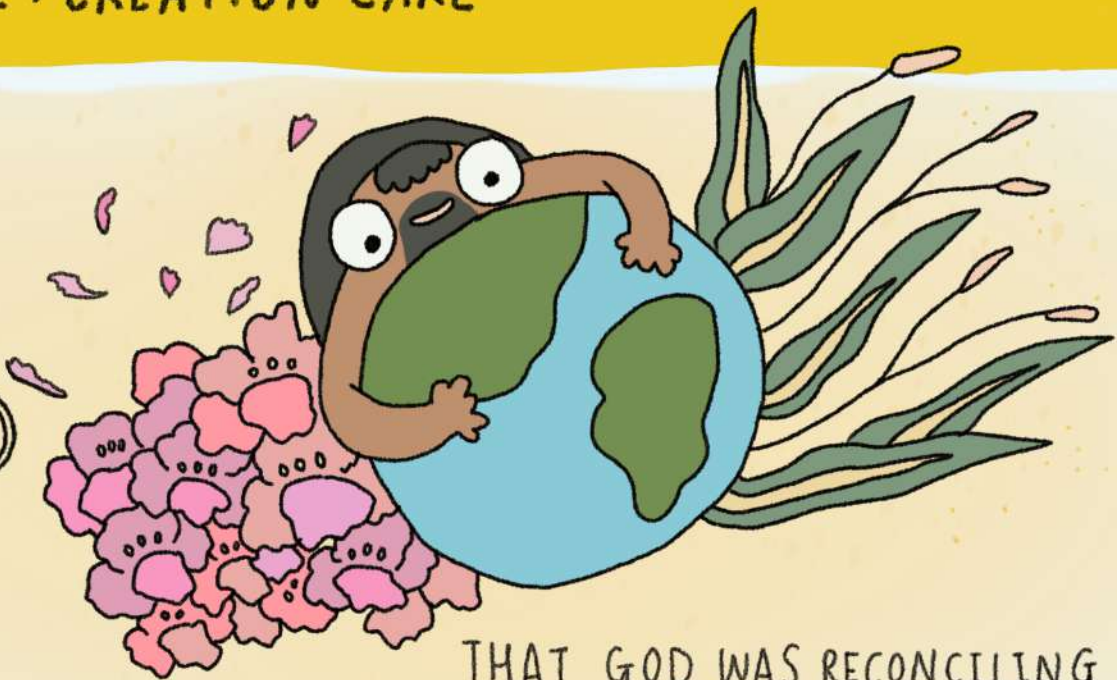
THE LAND IS MINE AND YOU RESIDE IN MY LAND AS FOREIGNERS AND STRANGERS...

YOU MUST PROVIDE FOR THE REDEMPTION OF THE LAND  
(LEV 25:23-24)



## CHAPTER 1: CREATION CARE

FOR  
GOD  
SO  
LOVED  
THE  
WORLD  
(JOHN 3:16)



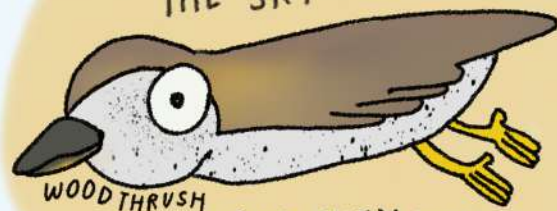
THAT GOD WAS RECONCILING  
THE WORLD TO GOD IN CHRIST

THINGS ON HEAVEN AND ON EARTH, ALL THINGS WERE CREATED  
IN GOD & FOR GOD (JOB 12:7-10)

BUT ASK THE ANIMALS,  
AND THEY WILL TEACH YOU



OR THE BIRDS IN  
THE SKY,



AND THEY WILL  
TELL YOU

OR SPEAK TO  
THE EARTH,  
AND  
IT WILL  
TEACH  
YOU

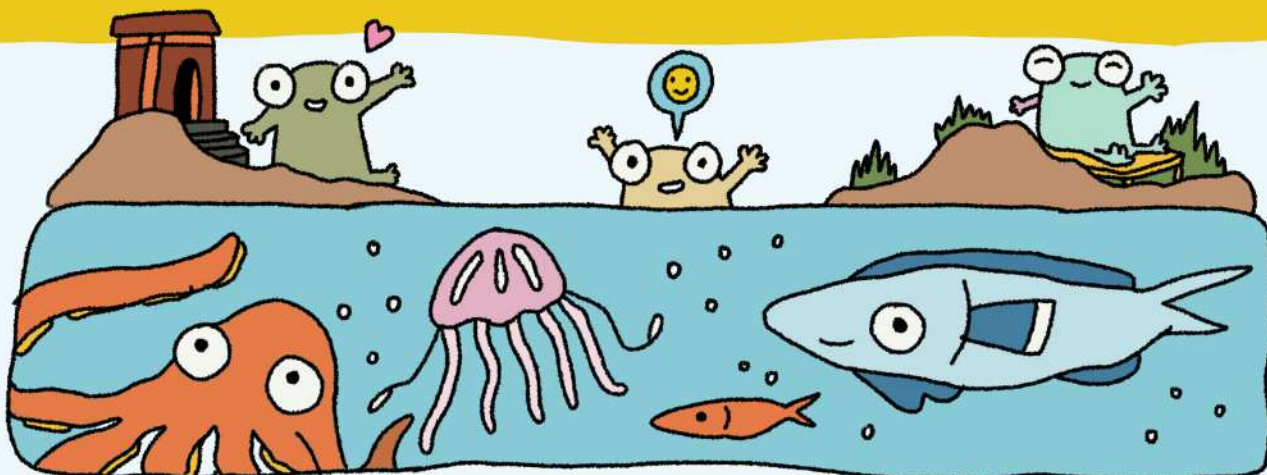


OR LET THE  
FISH IN THE  
SEA INFORM  
YOU.

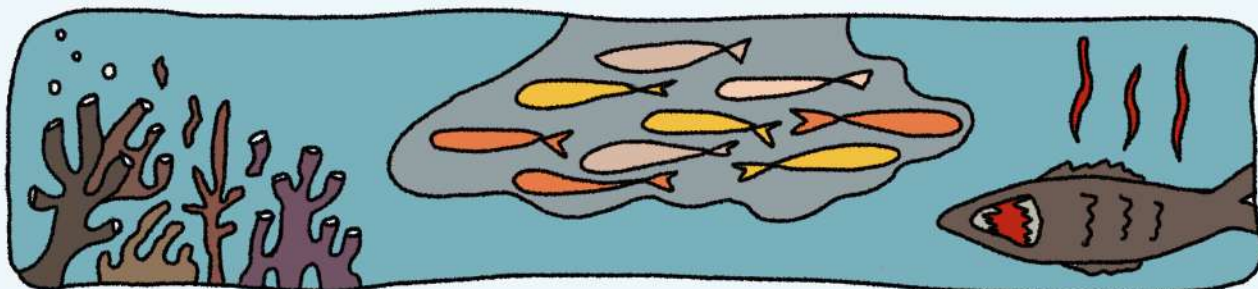




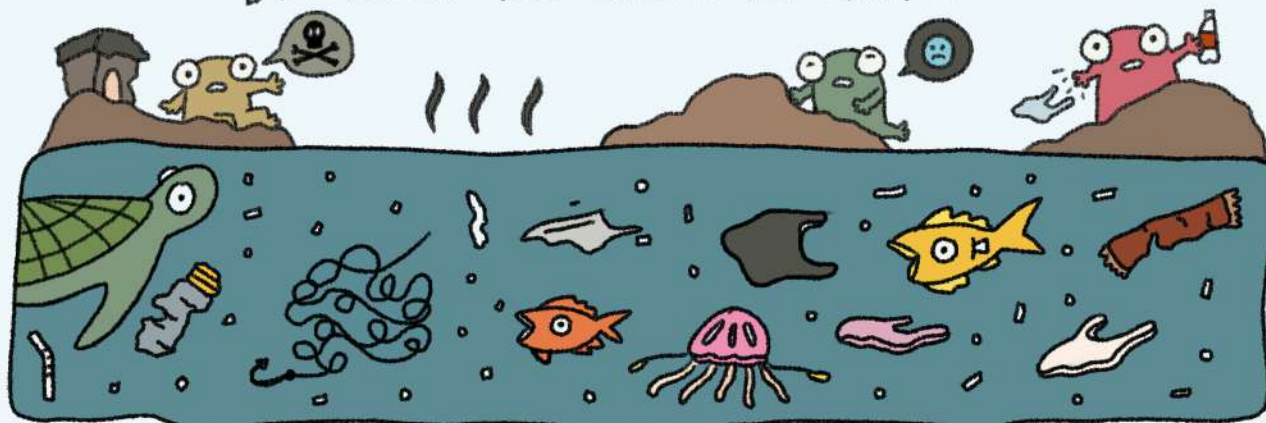
# CHAPTER 1: CREATION CARE



WHEN THE EARTH THRIVES, WE THRIVE

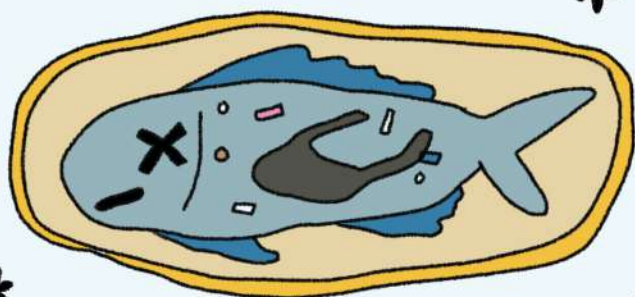


BUT WHEN THE EARTH IS SICK,



WE ARE SICK TOO.

OUR WATERS ARE AFFECTED BY HUMAN USE → OVERUSE AND PLASTIC POLLUTION, CHEMICAL DISCHARGE, DUMPING, OIL LEAKS, ACIDIFICATION, RUNOFF FROM FERTILIZERS AND MORE...



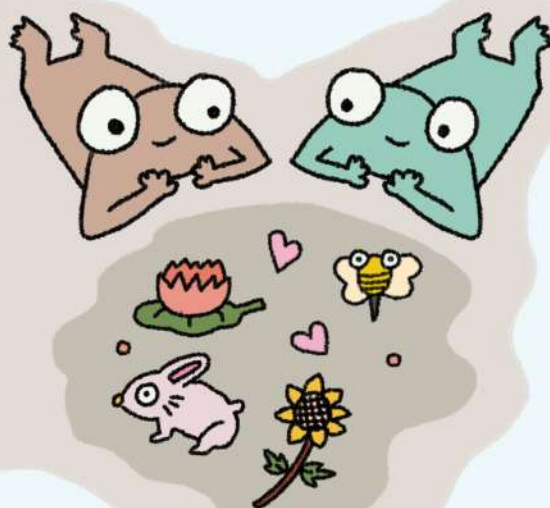
OUR HEALTH DEPENDS ON THE OCEAN'S HEALTH.

THE OCEAN HAS ABSORBED MORE THAN 90% OF HEAT CREATED BY INDUSTRIAL ACTIVITY SINCE THE 1970s, ONE-THIRD OF THE CARBON EMITTED. THE OCEAN REGULATES OUR TEMPERATURE & CARBON, BUT TOO MUCH OF BOTH HURTS OUR OCEANS.

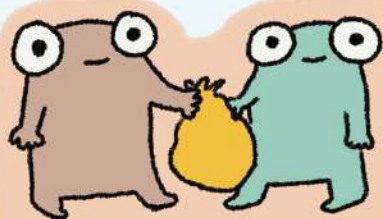


## CHAPTER 2 : CREATION CARE & PLACE-ROOTEDNESS

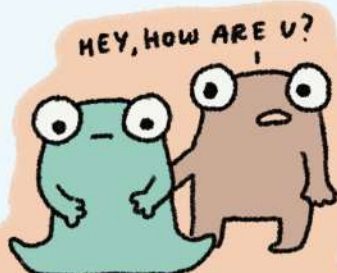
THE FIRST THING GOD ASKED US TO DO AFTER CREATING US WAS TO WATCH OVER AND TAKE CARE OF THE BEAUTIFUL EARTH (GEN. 2:15)



LATER, JESUS SAYS THE GREATEST THINGS WE ARE PUT ON EARTH TO DO ARE TO LOVE GOD AND TO LOVE OUR NEIGHBORS (MARK 2:30-31)



ENGAGE IN MUTUAL AID INITIATIVES!

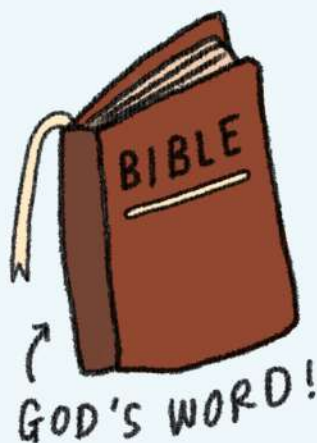


PROVIDE EMOTIONAL SUPPORT!



ADVOCATE FOR CLIMATE JUSTICE!

HOW CAN WE DO THIS WELL? FIRST, WE CAN SPEND TIME GETTING TO KNOW GOD, AND GETTING TO KNOW OUR NEIGHBORS AND THEIR NEEDS.



GOD'S WORD!



CHECK IN WITH EACH OTHER!

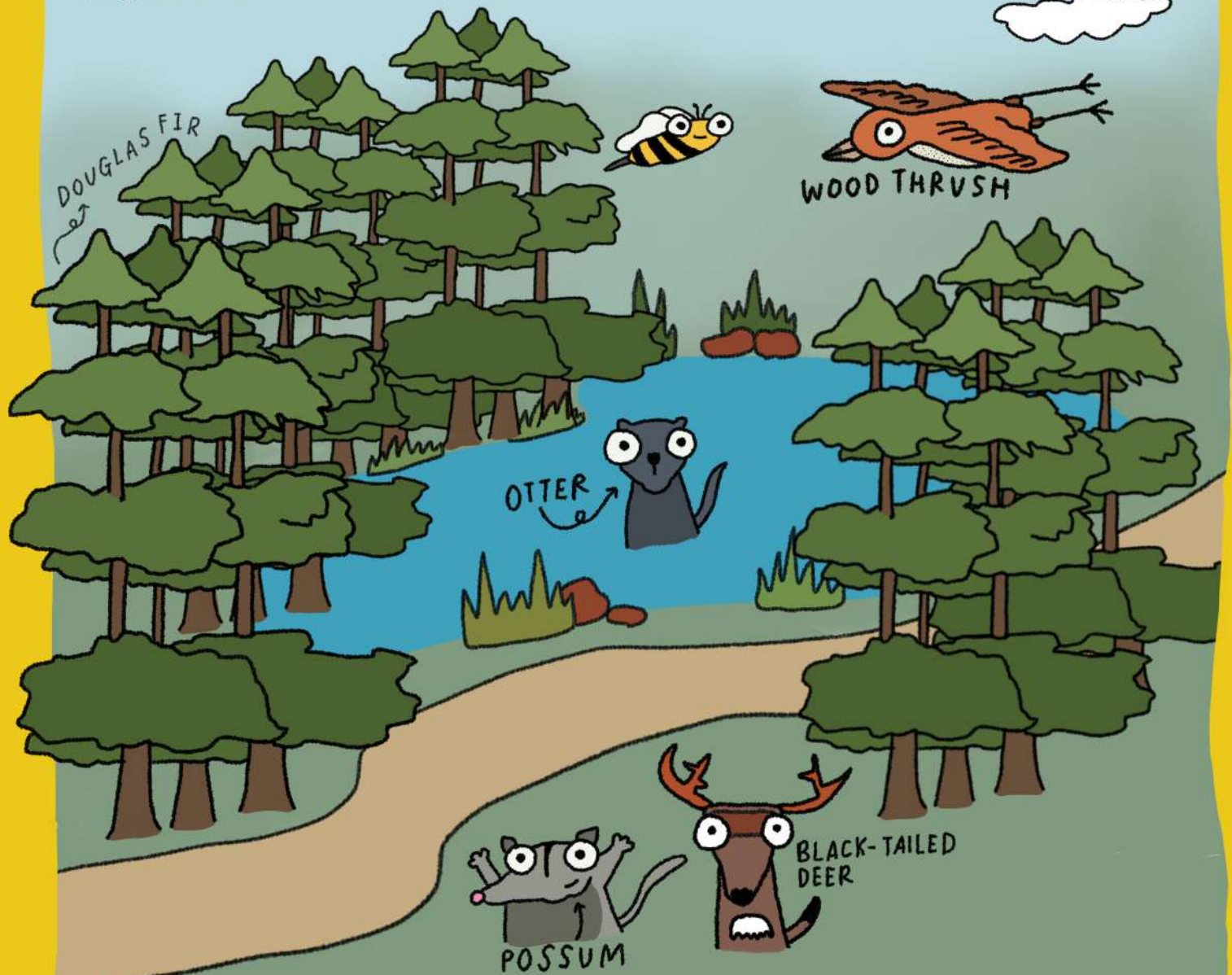


AND LET'S NOT FORGET PRAYER!



## CHAPTER 2 : CREATION CARE & PLACE-ROOTEDNESS

BUT HOW CAN WE DO THIS WELL?

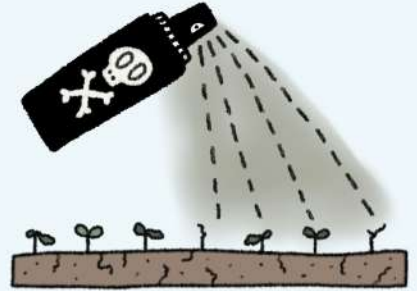


AND WE CAN SPEND TIME GETTING TO KNOW  
THE ANIMALS AND PLANTS AROUND US. THIS  
WILL HELP US GROW TO LOVE THEM AND CARE  
FOR THEM. ♥

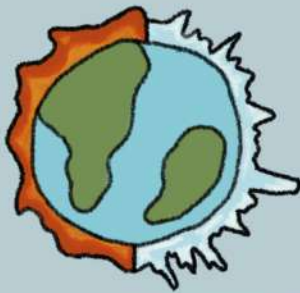


# CHAPTER 3: CLIMATE SCIENCE

THE BURNING OF FOSSIL FUELS, DEFORESTATION, AND HARMFUL FARMING PRACTICES INCREASES CO<sub>2</sub> AND OTHER GREENHOUSE GASES IN THE OZONE LAYER OF OUR ATMOSPHERE, WHICH HARMS THE EARTH.



WHILE THE EARTH GOES THROUGH NATURAL CYCLES OF WARMING & COOLING, THESE TAKE PLACE OVER THOUSANDS OF YEARS



OUR HOUSE IS ON FIRE!

BUT THIS WARMING IS NOT NATURAL, GIVEN ITS UNPRECEDENTED SPEED OF TEMPERATURE RISE. HUMAN ACTIVITIES ARE THE KEY DRIVERS OF THIS!!!

## CLIMATE CHANGE IS REAL

(AND THERE IS A VERY STRONG SCIENTIFIC CONSENSUS.)

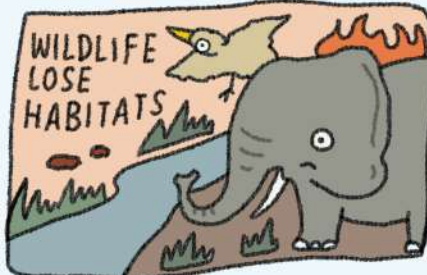
AND AS A RESULT...

IT WILL BE HARDER TO KEEP PEACE AS WE FIGHT



OVER SCARCE RESOURCES

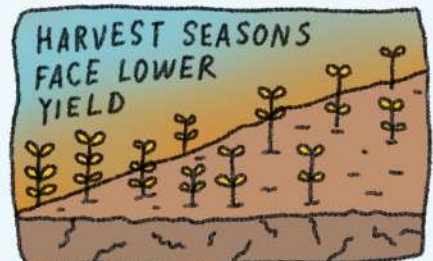
WILDLIFE LOSE HABITATS



ISLANDS ARE AT RISK OF FLOODING



HARVEST SEASONS FACE LOWER YIELD



HURRICANES AND FLOODS GET WORSE & DISPLACE COMMUNITIES



COMMUNITIES NEAR COAL PLANTS FALL SICK



OCEANS ARE ALSO GETTING WARMER



CLIMATE CHANGE MAKES EXISTING PROBLEMS LIKE FLOODING & HEALTH ISSUES MUCH WORSE, & CAUSES MORE PEOPLE AND WILDLIFE TO SUFFER & THEY'RE USUALLY THE ONES WHO DO THE LEAST TO CAUSE THE PROBLEM.



## CHAPTER 4 : FRONTLINE TESTIMONIES

HERE'S WHAT PEOPLE FROM ALL OVER THE WORLD ARE SAYING ABOUT CLIMATE CHANGE

IT'S NOT JUST TIME FOR CLIMATE ACTION. IT'S TIME FOR  
**CLIMATE JUSTICE.**

TETET LAURON  
(ACTIVIST IN PHILIPPINES)



GETTING INVOLVED IN CLIMATE JUSTICE WORK INVOLVES EVERYTHING. IT'S NOT AS SIMPLE AS RECYCLING OR BUYING LOCAL.

MAYA MENEZES  
(ORGANIZER, NO ONE IS ILLEGAL)



CREATION CARE ISN'T A 'POLITICAL' OR 'ENVIRONMENTAL' THING. CREATION CARE IS LOVE. THE ENVIRONMENT IS FAILING UPON THE PEOPLE WE LOVE.

LOWELL BLISS  
(ENVIRONMENTAL MISSIONARY)





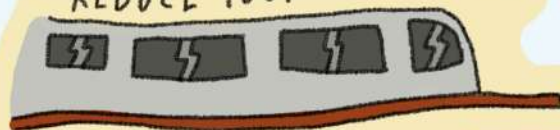
## CHAPTER 5: WAYS TO CARE FOR CREATION



GO LOCAL, SEASONAL, & PLANT-BASED FOR FOOD!



REDUCE YOUR FOOTPRINT!



SAVE ENERGY AT HOME!

# WAYS TO CARE FOR CREATION

\*NON-EXHAUSTIVE\*



REUSE, REDUCE,

NO BAG



RECYCLE!

START A CREATION & CLIMATE CARE TEAM AT CHURCH!



LEARN AND ADVOCATE ON ENVIRONMENTAL JUSTICE AND CLIMATE CHANGE



[SOJO.NET/CLIMATE](http://SOJO.NET/CLIMATE)

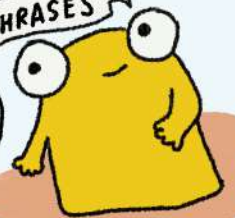


# CHAPTER 6 : COMMUNICATING FAITH & CLIMATE

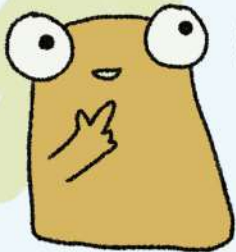
## COMMUNICATING FAITH & CLIMATE (A QUICK HOW-TO GUIDE)



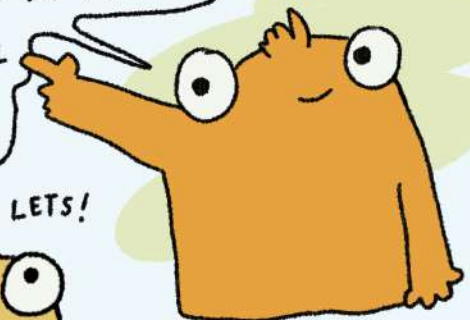
START WITH WORDS THAT FOCUS ON COMMON VALUES. USE WORDS AND PHRASES LIKE CARE FOR CLIMATE & CREATION, DO IT TOGETHER, BUILD COMMUNITY, HEALTH, IMAGINE, & PROTECT OUR COMMON HOME AND FUTURE.



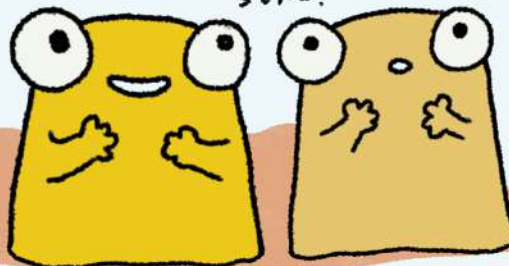
EMPHASIZE OUR MORAL RESPONSIBILITY TO CARE FOR GOD'S EARTH: "WE ARE ALL CALLED TO CARE FOR GOD'S EARTH, THE VERY FIRST GIFT WE WERE GIVEN BY GOD."



BUILD COMMUNITY AND HOPE AS YOU ACT ON THE CLIMATE TOGETHER: "I IMAGINE HOW MUCH FUN IT'LL BE TO WORK ON THE GARDEN TOGETHER & TEACH KIDS ABOUT FRESH FOOD!!!"

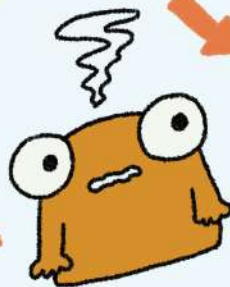


SHARE YOUR OWN STORY OR "CLIMATE TESTIMONY"! LIKE, "THIS IS HOW I STARTED CARING ABOUT CLIMATE CHANGE AND CREATION CARE!"



START SMALL ON A COMMUNITY LEVEL.

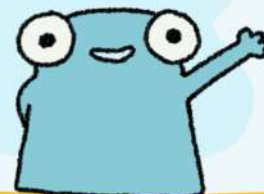
YOU CAN ALSO TALK ABOUT HEALTH!



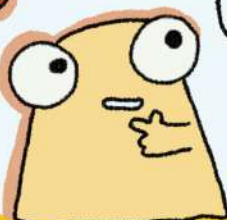
Y'KNOW, CLIMATE CHANGE HARMS OUR HEALTH AND OUR BODIES. WE CAN PROTECT THE HEALTH OF OURSELVES & OUR NEIGHBORS BY ACTING ON THE CLIMATE!

LET'S TALK ABOUT WHAT'S POSSIBLE TOGETHER! IT'S NOT ALL DOOM AND GLOOM.

"WILL YOU JOIN ME?"



HIGHLIGHT HOW CLIMATE CHANGE AFFECTS OUR VULNERABLE NEIGHBORS AND OUR CALL TO CARE FOR EACH OTHER.





# SO, WHAT IS CLIMATE JUSTICE?

★ CLIMATE JUSTICE RECOGNIZES THAT MARGINALIZED COMMUNITIES EXPERIENCE THE DAMAGING IMPACTS OF CLIMATE CHANGE FIRST & THE WORST. ★

THE CLIMATE JUSTICE MOVEMENT IS COMMITTED TO ADDRESSING ALL OF THE ROOT CAUSES OF THE CLIMATE CRISIS. IT'S NOT JUST AN ENVIRONMENTAL ISSUE. IT'S A SOCIAL, ECONOMIC & PUBLIC HEALTH ISSUE TOO. SO HOW DOES THE CLIMATE CRISIS AFFECT DIFFERENT COMMUNITIES?





## CHAPTER 8 : CLIMATE JUSTICE & WOMEN

DID YOU KNOW THAT  $\frac{1}{4}$  OF ALL ECONOMICALLY ACTIVE WOMEN ARE INVOLVED IN AGRICULTURE?

YET WOMEN STILL FACE SEVERE INEQUALITIES IN ACCESS TO LAND AND CREDIT.

WHILE WOMEN PRODUCE MOST OF THE WORLD'S FOOD, THEY OWN LESS THAN 20% OF THE WORLD'S TITLED LAND.



WOMEN ARE DISPROPORTIONATELY EXPOSED TO DIRTY FUELS; THEIR BODIES ABSORB TOXINS FROM GATHERING & USING & USING COAL FOR COOKING.

BEYOND THAT, HEALTH IMPACTS OF CLIMATE CHANGE ARE PARTICULARLY ACUTE FOR WOMEN IN THE FORM OF PERVERSIVE YET UNDETECTABLE ENVIRONMENTAL VIOLENCE.

WHAT ABOUT CLEANER STOVES POWERED BY RENEWABLES?

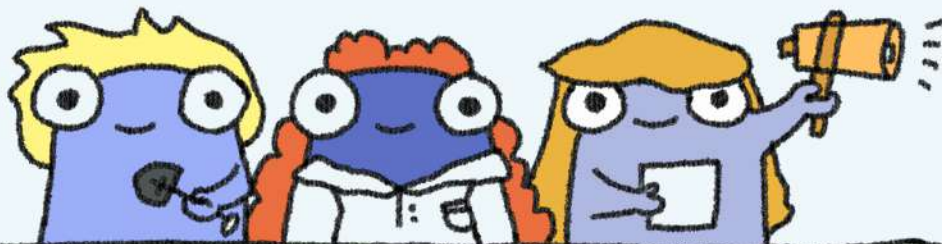


WOMEN COME UP WITH GREAT LAND-BASED & PLACE-BASED SOLUTIONS TO THE CLIMATE CRISIS WHERE THEY LIVE.



these solutions are often sustainable & gender-responsive.

WE NEED WOMEN AT ALL LEVELS OF DECISION-MAKING.



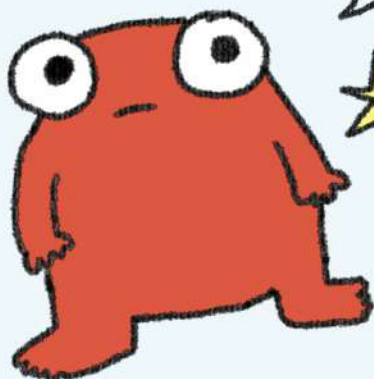
WE MUST DO BETTER TO CENTER AND EMPOWER WOMEN WHO ARE MOST IMPACTED BY CLIMATE POLICY & ENVIRONMENTAL CRISES. IF WE WANT CLIMATE POLICY THAT WORKS, LISTEN TO WOMEN.



## CHAPTER 9: CLIMATE JUSTICE & RACE

THE IMPACTS OF CLIMATE CHANGE FALL UNEVENLY ON DIFFERENT COMMUNITIES.

COMMUNITIES WHO DO THE LEAST TO CONTRIBUTE TO THE CLIMATE CRISIS...



HAVE TO BEAR THE IMPACTS FIRST & THE WORST ON THEIR BODIES AND THEIR LIVELIHOODS.



REGIONS LIKE UGANDA & CHAD NOW HAVE REGULAR RECORD-BREAKING FLOODS & DROUGHTS THAT AFFECT LIVELIHOODS

IN THE U.S., MORE THAN 50% OF PEOPLE WHO LIVE WITHIN 2 MILES OF A TOXIC WASTE FACILITY ARE PEOPLE OF COLOR

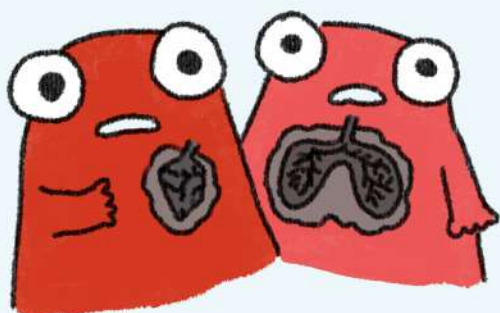


INDIGENOUS COMMUNITIES TODAY ARE SEEING THEIR NATIVE, SACRED LANDS DUG APART & THROUGH FOR BIG OIL PIPELINES.

THESE PIPELINES ARE RUNNING RIGHT THROUGH PRECIOUS FORESTS, RIVERS AND FARMS.



THIS IS BECAUSE WE GIVE PERMISSION FOR LANDFILLS, TOXIC WASTE SITES, BIG OIL & GAS COMPANIES, AND HIGHWAYS TO BE BUILT IN PRIMARILY BLACK & BROWN NEIGHBORHOODS.



AND, COMMUNITIES FACING ENVIRONMENTAL RACISM DEAL WITH SERIOUS HEALTH ISSUES LIKE ASTHMA, CARDIOVASCULAR DISEASE & EVEN CANCER.

THAT'S WHY CLIMATE JUSTICE IS ALSO RACIAL JUSTICE.



## CHAPTER 10: CLIMATE JUSTICE & MIGRATION

CLIMATE DISASTERS LIKE DROUGHTS, FLOODS, WILDFIRES, & HURRICANES HAPPEN MUCH MORE INTENSELY TODAY.



DESTRUCTION OF LAND, LACK OF CROPS, SEA LEVEL RISE, WATER SCARCITY, OR EVEN INCREASED VIOLENCE DUE TO FIGHTING OVER SCARCE RESOURCES...

MANY PEOPLE HAVE TO LEAVE HOME TO FIND A BETTER PLACE TO LIVE.

THESE PEOPLE ARE KNOWN AS

# CLIMATE MIGRANTS



LAND-BASED PEOPLE IN RURAL AREAS ARE MOST VULNERABLE, BUT URBAN AREAS ARE

AFFECTED BY SEA-LEVEL RISE, WILDFIRES AND MORE.



OUR HOMES, OUR LIVES, OUR FUTURES ARE NO LONGER SAFE. WE HAVE TO MOVE.

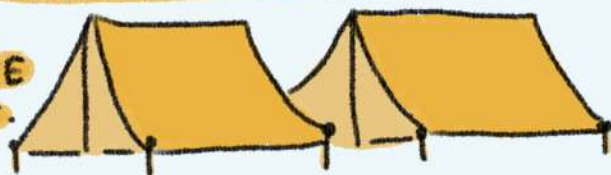
THE UNITED NATIONS



ESTIMATES THAT MORE PEOPLE ARE DISPLACED BY CLIMATE CHANGE THAN WAR

**26** MILLION CLIMATE MIGRANTS PER YEAR.

YET THESE MIGRANTS AREN'T LEGALLY CONSIDERED REFUGEES ACCORDING TO INTERNATIONAL LAW. THEY ARE LIKELY TO BE SENT BACK HOME OR FORCED INTO REFUGEE CAMPS.



THAT'S WHY CLIMATE JUSTICE IS ALSO MIGRANT JUSTICE.



# CHAPTER 11: CLIMATE JUSTICE & PEACE

CLIMATE CHANGE IS A BIG THREAT TO GLOBAL PEACE TODAY, IT'S OFTEN CALLED A "THREAT MULTIPLIER."



COUNTRIES THAT ARE ALREADY IN "CONFLICT ZONES" WILL BE MOST AFFECTED BY CLIMATE CHANGE.

WHILE COUNTRIES AND REGIONS HAVE ALWAYS FOUGHT OVER LAND AND WATER, CLIMATE CHANGE WILL MAKE NATURAL RESOURCES EVEN MORE SCARCE AND CAUSE MORE CONFLICT.

E.G., **GRAZING LAND FOR RAISING ANIMALS IS SHRINKING** BECAUSE OF FLOODING. HERDERS ARE BRINGING LIVESTOCK CLOSER TO WATER SOURCES NEAR FISHERMEN & FARMERS, CAUSING **LOTS OF TENSION BETWEEN THESE GROUPS.**



CLIMATE CHANGE IS CAUSING MORE DROUGHT IN PLACES WHERE THERE IS LESS FRESHWATER TO DRINK OR USE. THIS CAUSES INTENSE CONFLICT BETWEEN COUNTRIES THAT BORDER MAJOR RIVERS OR LAKES.



that's why climate justice is also a peace issue.



# WELCOME TO THE GARDEN OF

## CLIMATE ACTION

SIMPLE WAYS TO ACT ON CLIMATE IN YOUR COMMUNITY, LOCALLY AND BEYOND!



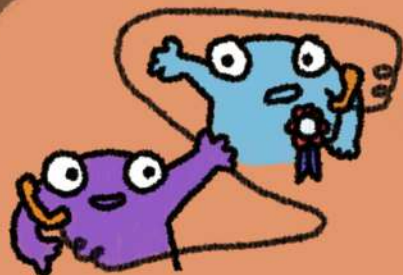
REGULARLY CARE FOR CREATION WITH YOUR CHURCH OR YOUR LOCAL COMMUNITY!

SEE PAGES 2-6

SUPPORT AND STRENGTHEN EXISTING LOCAL CLIMATE OR ENVIRONMENTAL WORK IN YOUR COMMUNITY. FIND WAYS FOR YOUR FAITH COMMUNITY TO PARTNER WITH THIS WORK!



SEE PAGES 9-10



CALL YOUR REPS!  
LET THEM KNOW  
THAT YOU CARE  
ABOUT CLIMATE  
JUSTICE AND  
JUST POLICIES.



HIT THE STREETS,  
JOIN MARCHES &  
PHYSICAL ACTIONS IN  
KEY POLITICAL MOMENTS  
WITH YOUR FRIENDS  
AND COMMUNITY.

FOR ACTION OPPORTUNITIES,  
RESOURCES & TIPS ON FAITH-  
ROOTED ACTION  
FOR JUSTICE,

JOIN US AT :  
[SOJO.NET/SOJO ACTION](http://SOJO.NET/SOJO ACTION)





# RESOURCE PACK

EMBARKING ON YOUR CLIMATE ACTION JOURNEY?  
WE'VE GOT YOU COVERED.



FOR ALL YOUR  
COMMON CLIMATE  
QUESTIONS:



SEE SOJO'S  
CHRISTIANS  
+ CLIMATE  
Q&A!

FOR STORIES, TIPS  
& INSPO FOR FAITH-  
ROOTED JUSTICE.

**SOJO** [SOJO.NET/  
SOJOACTION](http://SOJO.NET/SOJOACTION)

CALCULATE  
YOUR ECO-  
FOOTPRINT



FOOTPRINT  
CALCULATOR  
-ORG

ON CLIMATE SCIENCE.



GLOBAL WEIRDING SERIES  
WITH KATHARINE HAYHOE

LET'S TALK:

**FAITH x  
CLIMATE**

BY BLESSED  
TOMORROW!

FIND YOUR  
LOCAL ORG!



CLIMATE  
JUSTICE  
ALLIANCE  
MEMBERS

**52** WAYS TO  
CARE FOR  
CREATION!

BY CREATION  
JUSTICE MINISTRIES



CHRISTIAN  
CLIMATE  
ACTION

FOR SERMONS, PRAYERS, LITURGIES

OTHER INFLUENTIAL TEXTS: **PARIS AGREEMENT, LAUDATO SI,  
JEMEZ PRINCIPLES, PRINCIPLES OF ENVIRONMENTAL JUSTICE**